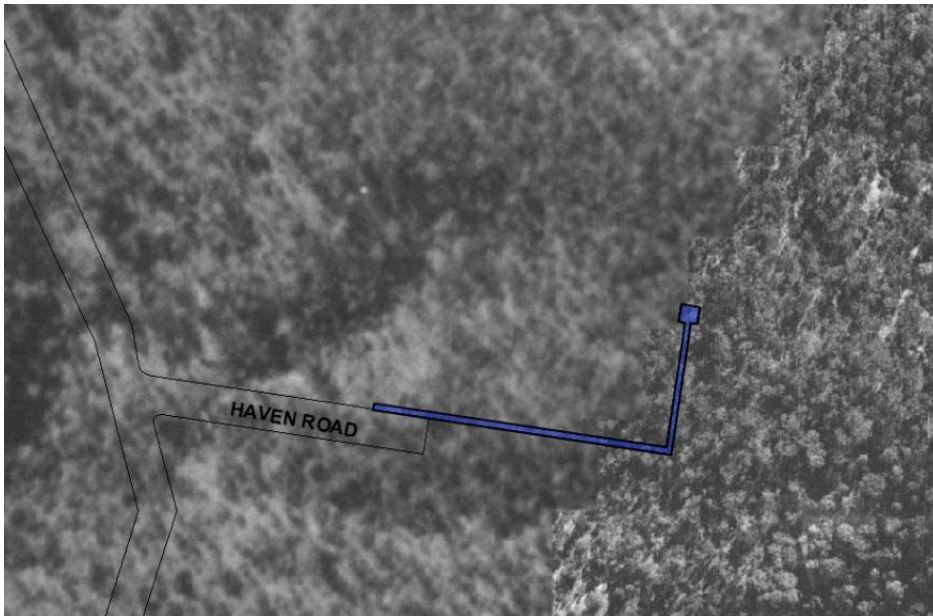


Heritage Citation



Pullenvale Cemetery

Key details

Addresses	At 243A Haven Road, Pullenvale, Queensland 4069
Type of place	Burial ground, Cemetery
Period	Victorian 1860-1890
Lot plan	L249_SL12138
Key dates	Local Heritage Place Since — 1 January 2004 Date of Citation — June 2011
Criterion for listing	(A) Historical; (B) Rarity; (C) Scientific; (E) Aesthetic; (G) Social

On 6 September 1873, a paddock of 4.05 hectares (10 acres) in the district of Pullenvale was reserved for the Pullenvale Cemetery. John Ballard, John Butler, Charles Gregory, Thomas Jones and Theophilus Pellatt were the trustees. In July 1930, responsibility for the administration of cemeteries was formally transferred to the new Brisbane City Council (formed 1925). Pullenvale Cemetery closed soon after this transfer. It contains one

marked grave (Adam James Furley Walker) and seven unmarked graves within this small 806 square metre graveyard.

Statement of significance

Relevant assessment criteria

This is a place of local heritage significance and meets one or more of the local heritage criteria under the Heritage planning scheme policy of the *Brisbane City Plan 2014*. It is significant because:

Historical

CRITERION A

The place is important in demonstrating the evolution or pattern of the city's or local area's history as a late nineteenth century burial ground.

Rarity

CRITERION B

The place demonstrates rare, uncommon or endangered aspects of the city's or local area's cultural heritage as a small local cemetery in a remote location.

Scientific

CRITERION C

The place has the potential to yield information that will contribute to the knowledge and understanding of the city's or local area's history as an early burial ground associated with the post-European settlement of the area.

Aesthetic

CRITERION E

The place is important because of its aesthetic significance

as a small fenced burial ground standing on a stony slope within a remote lightly wooded paddock.

Social

CRITERION G

The place has a strong or special association with the life or work of a particular community or cultural group for social, cultural or spiritual reasons

as the burial ground associated with the early settlement of the district.

Copyright Brisbane City Council

Note: This citation has been prepared on the basis of evidence available at the time including an external examination of the building. The statement of significance is a summary of the most culturally important aspects of the property based on the available evidence, and may be re-assessed if further information becomes available. The purpose of this citation is to provide an informed evaluation for heritage registration and information. This does not negate the necessity for a thorough conservation study by a qualified practitioner, before any action is taken which may affect its heritage significance.

Citation prepared by — Brisbane City Council (page revised June 2022)



Dedicated to a better Brisbane