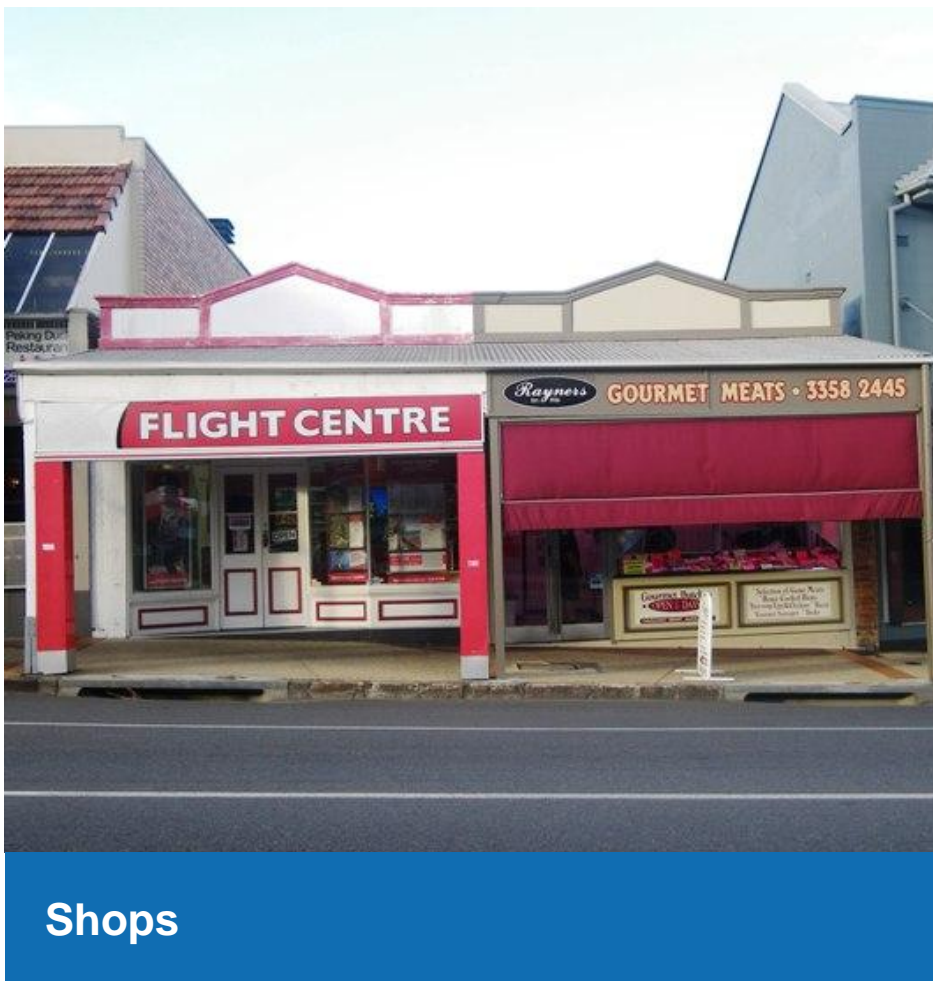


Heritage Citation



Key details

Addresses	At 880 Brunswick Street, New Farm, Queensland 4005
Type of place	Shop/s
Period	Interwar 1919-1939
Style	Queenslander
Lot plan	L15_RP9124
Key dates	Local Heritage Place Since — 30 October 2000 Date of Citation — April 2011

Construction

Roof: Corrugated iron;
Walls: Timber

Criterion for listing

(A) Historical; (B) Rarity

This pair of interwar shops (880-882 Brunswick Street) was built in 1925 following the transfer of the property in 1924 to Richard Thorne and Sydney Rayner. Shortly afterwards they established their butchery business as Thorne & Rayner on the site, previously located at 770 Brunswick Street (corner Browne and Brunswick Streets). In 1931 the whole property at 880-882 Brunswick Street was transferred to Rayner, who then traded as a butcher under his own name. In 1956 Rayner transferred the butchery business to his son. The whole property was still owned by the Rayner family in 2011 with 882 Brunswick Street now operating as a butcher shop under lease. Some original shop features have been retained, including the simple parapet and footpath awning across the building frontage. The more intact shop (880 Brunswick Street) still has its inset glass and double-door entry flanked by large timber-framed display windows.

Statement of significance

Relevant assessment criteria

This is a place of local heritage significance and meets one or more of the local heritage criteria under the Heritage planning scheme policy of the *Brisbane City Plan 2014*. It is significant because:

Historical

CRITERION A

The place is important in demonstrating the evolution or pattern of the city's or local area's history

as a rare example of a pair of 1920s shops in New Farm; as a surviving example of the small-scale commercial activity in the Merthyr Road/Brunswick Street precinct to cater for New Farm's population increase reflected by the 1925 Brunswick Street tramway extension to New Farm Park.

Rarity

CRITERION B

The place demonstrates rare, uncommon or endangered aspects of the city's or local area's cultural heritage

as a rare, surviving example of a relatively intact pair of interwar shops in New Farm.

References

1. Brisbane City Council Properties on the Web
2. Brisbane City Council, 1946 aerial photographs.
3. Brisbane City Council, *Sewerage Maps*, Detail Plan No 188, 9 March 1925
4. Brisbane City Council, Surveyor's Notebook, 4 Feb 1924 [shows shops]
5. Musgrave, Elizabeth and Kaylee Wilson, *New Farm and Teneriffe Hill Heritage and Character Study*, Brisbane City Council Heritage Unit, Oct 1995
6. Department of Environment and Resource Management, Queensland Certificates of Title.
7. *Queensland Post Office Directory*, 1925-26; 1926; 1928-29
8. Benjamin, J. and G. Grant, *Reflections on New Farm*, New Farm & Districts Historical Society, 2008, pg 60-65 [based on Rayner family recollections]
9. Bennett, H, 'New Farm from quality street to mixed assortment', *Brisbane Houses, Gardens, Suburbs and Congregations*, Papers No 22, Brisbane History Group, 2010 pg 162-163
10. *Brisbane Courier*, 12 May 1928, pg 7
11. *Brisbane Courier*, 22 April 1932, pg 12

Copyright Brisbane City Council

Note: This citation has been prepared on the basis of evidence available at the time including an external examination of the building. The statement of significance is a summary of the most culturally important aspects of the property based on the available evidence, and may be re-assessed if further information becomes available. The purpose of this citation is to provide an informed evaluation for heritage registration and information. This does not negate the necessity for a thorough conservation study by a qualified practitioner, before any action is taken which may affect its heritage significance.

Citation prepared by — Brisbane City Council (page revised June 2022)



Dedicated to a better Brisbane