

## Heritage Citation



### The Moorings

#### Key details

<b>Addresses</b>	At 1 Riverview Court, New Farm, Queensland 4005
<b>Type of place</b>	House
<b>Period</b>	Interwar 1919-1939
<b>Style</b>	Old English
<b>Lot plan</b>	L2_RP42927
<b>Key dates</b>	Local Heritage Place Since — 30 October 2000 Date of Citation — January 2011
<b>Construction</b>	Roof: Tile; Walls: Masonry - Render
<b>People/associations</b>	F. Lee (Builder); Mervyn Rylance (Architect)

'The Moorings', prominently located overlooking the Brisbane River, was designed by architect Mervyn Rylance and built in 1934 for Dr Arthur John Ross and his wife Dorothy James. The construction of the house followed the transfer of the property the previous year from Joseph William Sutton to Dorothy Ross. The Ross family owned the property until 1947. Dr Ross, a medical practitioner, conducted his practice at Rothwell Chambers in the city and also initially at the house from 1934 when it was listed as 1 Merthyr Road. This two-storey masonry-rendered house was built in the Inter-War Old English style. Features include the dormer windows on the upper level, porthole windows on both levels, timber barge-boards and decorative brick capping on top of the chimney. 1 Merthyr Road was changed to 1 Riverview Court when a cul-de-sac was created at this western section of Merthyr Road in the mid 2000s.

---

## Statement of significance

### Relevant assessment criteria

This is a place of local heritage significance and meets one or more of the local heritage criteria under the Heritage planning scheme policy of the *Brisbane City Plan 2014*. It is significant because:

---

#### Historical

##### CRITERION A

The place is important in demonstrating the evolution or pattern of the city's or local area's history

as a good example of the substantial, often architect designed houses, constructed in New Farm during the building boom of the interwar years when the large estates of the nineteenth century were subdivided for residential development.

---

#### Representative

##### CRITERION D

The place is important in demonstrating the principal characteristics of a particular class or classes of cultural places

as a good example of an interwar Old English style residence.

---

## Aesthetic

### CRITERION E

The place is important because of its aesthetic significance

for its appealing interplay of roof shapes, fine detailing and use of contrasting materials.

---

## Historical association

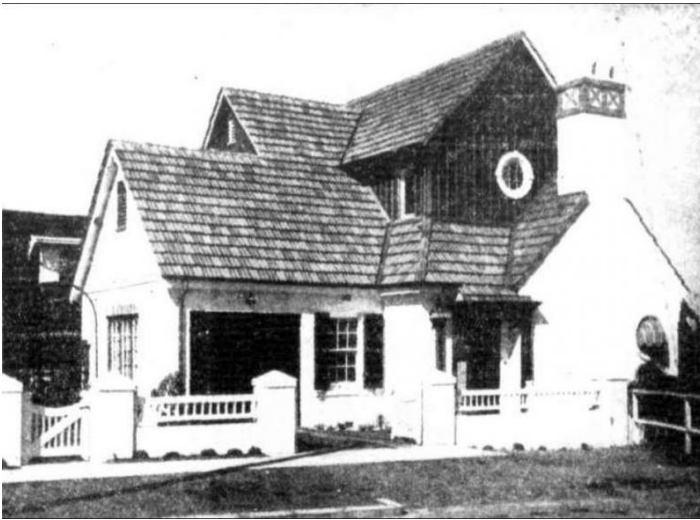
### CRITERION H

The place has a special association with the life or work of a particular person, group or organization of importance in the city's or local area's history

as a good example of the work of architect, Mervyn Rylance, whose high-quality domestic dwellings made a significant contribution to Brisbane's interwar architecture.

---

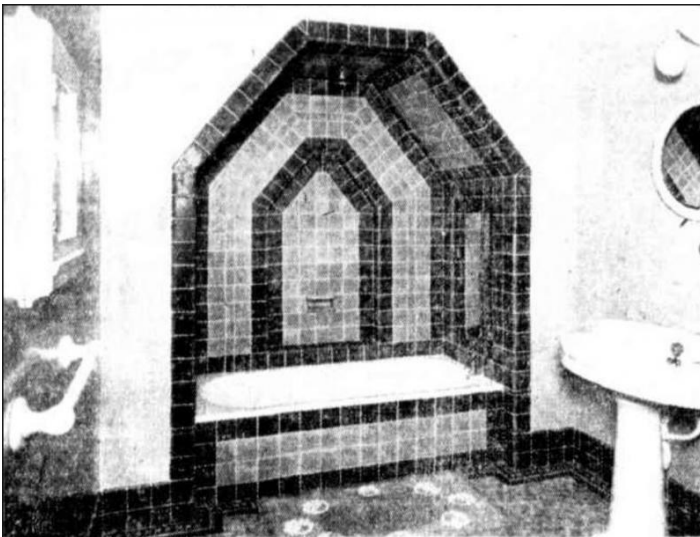
## Supporting images



'Exterior of The Moorings',  
The Sunday Mail (Brisbane, Qld. : 1926 - 1954), 27  
January 1935, p. 16,  
viewed 2 October 2019, <http://nla.gov.au/nla.news-article97846193>



'Entrance Doors',  
The Sunday Mail (Brisbane, Qld. : 1926 - 1954), 27  
January 1935, p. 16,  
viewed 2 October 2019, [http://nla.gov.au/nla.news-  
article97846193](http://nla.gov.au/nla.news-article97846193)



'Beautiful Bathroom Setting',

The Sunday Mail (Brisbane, Qld. : 1926 - 1954), 27  
January 1935, p. 16,  
viewed 2 October 2019, [http://nla.gov.au/nla.news-  
article97846193](http://nla.gov.au/nla.news-article97846193)



'The dining room',  
The Sunday Mail (Brisbane, Qld. : 1926 - 1954), 27  
January 1935, p. 16,  
viewed 2 October 2019, [http://nla.gov.au/nla.news-  
article97846193](http://nla.gov.au/nla.news-article97846193)



'The lounge room',  
The Sunday Mail (Brisbane, Qld. : 1926 - 1954), 27  
January 1935, p. 16,  
viewed 2 October 2019, [http://nla.gov.au/nla.news-  
article97846193](http://nla.gov.au/nla.news-article97846193)

## References

1. Brisbane City Council Properties on the Web
2. Brisbane City Council, 1946 aerial photographs.
3. Brisbane City Council, Sewerage Maps, Detail Plan No. 171, 18 June 1925
4. Brisbane City Council, Surveyor's Notebook.
5. Brisbane City Council, *New Farm and Teneriffe Hill Heritage and Character Study*, Oct 1995, pg 54 [previously 1 Merthyr Rd]
6. Brisbane City Council, Heritage Unit, Building Indexes 1932-1934. [see Applicant Ross for dwelling on Merthyr Road, 1933]
7. Department of Environment and Resource Management, Queensland Certificates of Title.
8. Australian Electoral Rolls, Subdivision Merthyr, 1936; 1937
9. *Queensland Post Office Directory*, 1935; 1936; 1937; 1938; 1939; 1940
10. Bennett, H, 'New Farm from quality street to mixed assortment', *Brisbane Houses, Gardens, Suburbs and Congregations*, Papers No 22 Brisbane History Group, 2010 pg 151-175
11. Watson, Donald, and Judith McKay, *A Directory of Queensland Architects to 1940* (Brisbane, University of Queensland Library, 1984), p 172
12. Apperly, R., R. Irving, P. Reynolds, *A Pictorial Guide to Identifying Australian Architecture*, 1989, pg 202-205
13. Kennedy, M. 'Domestic Architecture in Queensland Between the Wars', Master of the Built Environment thesis, Graduate School of the Built Environment, University of New South Wales, Jan 1989, pg 205
14. *Courier Mail*, 20 April 1934, pg 21
15. *Courier Mail*, 18 May 1934, pg 25
16. *Courier Mail*, 7 Dec 1934, pg 14

---

## Copyright Brisbane City Council

**Note:** This citation has been prepared on the basis of evidence available at the time including an external examination of the building. The statement of significance is a summary of the most culturally important aspects of the property based on the available evidence, and may be re-assessed if further information becomes available. The purpose of this citation is to provide an informed evaluation for heritage registration and information. This does not negate the necessity for a thorough conservation study by a qualified practitioner, before any action is taken which may affect its heritage significance.

Citation prepared by — Brisbane City Council (page revised June 2022)



*Dedicated to a better Brisbane*