

Heritage Citation



Wynnum Presbyterian Church (former)

Key details

Addresses	At 238 Bay Terrace, Wynnum, Queensland 4178
Type of place	Church
Period	Interwar 1919-1939
Style	Carpenter Gothic
Lot plan	L12_SP160701
Key dates	Local Heritage Place Since — 1 January 2004 Date of Citation — January 2011
Construction	Roof: Corrugated iron; Walls: Timber

This former Presbyterian Church was constructed in 1920 to accommodate increasing numbers of Presbyterians in the Wynnum area after the previous church was closed in 1918. The Wynnum church continued to hold services until the 1950s when it was converted for use as a church hall.

History

By the end of the nineteenth century, the Wynnum Manly district was becoming a popular seaside resort, particularly with the addition of the railway line to Cleveland in 1899. By 1898, the district had a population of around 200, and in 1902 Wynnum was declared a Shire Council. As the district gained increasing popularity, churches from the Anglican, Methodist, Catholic and Presbyterian denominations were established in the area to cater for the community's spiritual needs.

Wynnum's first Presbyterian Church was constructed in 1896 in Chestnut Street. Prior to this church services had been held in the home of prominent Brisbane doctor Sir David Hardie. In July 1918, that church was sold and in 1920 the Wynnum Presbyterian Church and Manse were constructed on the corner of Bay Terrace and Walnut Street.

For the next 32 years, the church provided a place of worship for the local Presbyterian community and the manse housed numerous ministers including Rev.'s Andrew Wilson, Ed. Norton, Roger Stone and George Logan. However, with the construction of the nearby St Andrews Presbyterian Church in 1951, the Wynnum church was closed and converted into a church hall for use by St Andrews parishioners. The manse remained intermittently in use until 2002 when Rev. George Logan moved out of residence.

The manse has since been used to house a student minister in training and has also been rented out, but has otherwise remained vacant. The church hall continues to play a role in the local Presbyterian community's social events and religious education including children's bible school.

Description

This timber and tin church is characteristic of modest interwar suburban places of worship. The church features a central enclosed porch with stairs leading up to it as the main entry to the building, above which a wheel window and flying gable are prominent.

Although the church initially featured a decorative projecting gable, this has since been removed. A set of stairs on the right hand side leading up to the front porch have also been removed. The colour scheme of the church has also been altered and the corrugated iron roof was replaced in 1992. When the church was converted into a hall in the 1950s the internal church fittings were removed and replaced. Internally, the building has timber floors.

Statement of significance

Relevant assessment criteria

This is a place of local heritage significance and meets one or more of the local heritage criteria under the Heritage planning scheme policy of the *Brisbane City Plan 2014*. It is significant because:

Historical

CRITERION A

The place is important in demonstrating the evolution or pattern of the city's or local area's history as evidence of Wynnum's development during the interwar period and that of the local Presbyterian church.

Aesthetic

CRITERION E

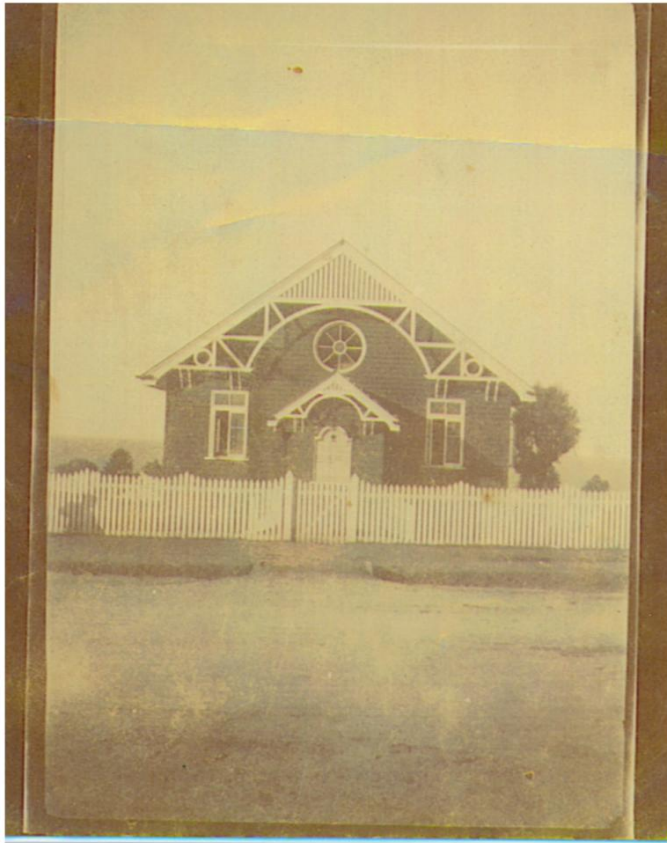
The place is important because of its aesthetic significance as a timber and tin interwar church situated prominently on Bay Terrace.

Social

CRITERION G

The place has a strong or special association with the life or work of a particular community or cultural group for social, cultural or spiritual reasons for its long and continued association with the local Presbyterian community.

Supporting images



Presbyterian Church, Wynnum. This building on Bay Terrace, near the corner of Walnut St, was built in 1920 and was used until 1960 when the new brick building was built across the road (Source: Brisbane City Council, BCC-WYN-312).

References

1. *Certificates of Title*, Department of Natural Resources and Water
2. Macdougall, M. G. 1951 *Wynnum Jubilee Celebrations*, Consolidated Publishing, Brisbane
3. 1920, *Presbyterian Outlook*, 1 March, p.21
4. 1920, *Presbyterian Outlook*, 1 July, p.19

Copyright Brisbane City Council

Note: This citation has been prepared on the basis of evidence available at the time including an external examination of the building. The statement of significance is a summary of the most culturally important aspects of the property based on the available evidence, and may be re-assessed if further information becomes available. The purpose of this citation is to provide an informed evaluation for heritage registration and information. This does not negate the necessity for a thorough conservation study by a qualified practitioner, before any action is taken which may affect its heritage significance.

Citation prepared by — Brisbane City Council (page revised September 2022)



Dedicated to a better Brisbane